



PORT OULU

PORT HANDBOOK 2021–2022

Contents

Foreword: Ready for growth!	4
Northern gateway continues to expand	6
Northern Gateway – Multipurpose Port of Oulu	6
Location Oulu	8
Services in Oulu	10
The port in detail	30
Useful Addresses	32

PORT OULU

Port of Oulu
Poikkimaantie 16,
Fin-90400 Oulu
Tel: +358 44 703 2753
www.ouluport.com



Responsible Port digitalisation!

In recent years, corporate responsibility has become an increasingly important issue that warrants constant attention. Forward-looking corporations are already busy implementing ideas focused on operation that is increasingly responsible and sustainable from the perspective of the environment, staff, clients, and society as a whole. When it comes to responsibility in a wide sense, climate change is one of the hottest topics of discussion internationally. Corporations are faced with a tough challenge – not just in terms of climate change but in terms of responsibility as a whole: are we ready to take quick and concrete action to make things better and improve responsibility, even if it means increased costs? The Port of Oulu's answer is clear: yes, we are ready. What's more, we are already well on our way. We consider responsibility one of our most important themes as we move towards a better and cleaner future together with our staff and clients.

Digitalisation is one of the most powerful forces of change that the port industry will face going forward. However, it is by no means a threat: it is a real chance to make things better, raise awareness and most of all, increase responsibility. With digitalisation, we are able to get a much better picture of our operation than before as well as react to changes more effectively and swiftly. Digitalisation and responsibility are seldom talked about at the same time, but in all future development projects in the Port of Oulu, the two will be closely intertwined.

It is also extremely heartening that all the feedback coming from our clients on environmental matters, responsibility issues as well as port digitalisation has been positive. We encourage improvements and work together with our clients to come up with ways to develop different areas of operation. This is the model for development that we want to keep up and improve going forward. As a Port of Oulu client, you are more than welcome to discuss ways in which we could jointly improve your supply chain as we move towards a cleaner and more efficient future. The sustainably built infrastructure in the Port of Oulu gives your company the best possible starting point for a successful future. Thanks to the development projects implemented in recent years, we are now able to offer our clients dozens of hectares of new cargo handling space. Please get in touch – let's get working together on responsible port digitalisation!

This Port Handbook also offers you a comprehensive insight into the various actors operating in the Port of Oulu. Our seasoned professionals representing a variety of expertise are ready to answer your questions and help you with any everyday problems you might have. The Port of Oulu is a genuine all-purpose port that serves all types of industry and companies all year round, 24/7. These are people you can truly rely on!

Marko Mykkänen
Managing Director
Port of Oulu Ltd

LOCAL EXPERTISE WITH WORLDWIDE INFLUENCE

Flexible and multi-modal connections by land, sea, air and rail

An inspiring strategy stimulates increase of services

High quality services, cargo handling and storage

The biggest container terminal in the Barents region

Ongoing investments in infrastructure to meet future growth

PORT OULU

Introduction

Northern gateway continues to expand

The strategic location of Oulu has made it a natural gateway for trade with northern Finland. The port handles a wide variety of unitised cargo and other traffic and is looking to diversify still further. Oulu is the largest port on the Bothnian Bay handling containers and bulk cargo.

Down the years, Oulu has been a natural crossroads for trade because of its good location. Today, the port is a key player in both domestic and international transport. There are regular shipping services to major ports in Europe.

Oulu is equipped to handle a wide variety of cargo in its three harbours, Oritkari, Nuottasaari and Vihreäsaari. A significant part of its throughput is containers and unitised traffic and the port is continuing to invest in new facilities and more terminal space to deal with this growing traffic.

Each year, the port handles about 3.6 million tonnes of cargo, about 50,000 teu of containerised cargo and receives over 550 ship calls. The main exports are forest products – especially kraftliner and sawn timber – and chemicals, while imports consist mainly of bulk products including cement, fuel oil and raw materials for the forest industry.

Oulu is an ideal gateway for importers and exporters across northern Finland. The port is also a key asset for the City of Oulu, the largest township in northern Finland. It makes a vital contribution to the local economy and provides fast and regular sea links for manufacturers and other commercial enterprises.

“We want to be the most valued logistics partner in Northern Europe, and digitalisation plays a significant role in that,” says Mira Juola who leads the PORT OULU Smarter. digitalisation project. “We do what’s best for the export and import industry in northern Finland. A functioning digital infrastructure serves our vast ecosystem as well as our existing and new customers.”



Northern Gateway – Multipurpose Port of Oulu

OULU has built a fine reputation as a multipurpose port – and much of the credit is due to its good range of harbours, which are well positioned for ease of access and offer modern handling and storage facilities for a variety of cargoes.

The port has three harbours – Oritkari, Nuottasaari and Vihreäsaari – located south-west of the city. Oritkari and Nuottasaari harbours are linked directly to the national rail network and there is good access for truck traffic with a minimum of congestion or delays.

Oritkari

Handling of containers and general cargo is focused on Oritkari harbour, which has been developed and expanded in recent years to meet the growing demand for general and unitised cargo handling. Both ro-ro and lo-lo cargo handling methods are used in Oritkari, which has three quays with a total quay length of 843 metres.

The harbour has a panamax ship-to-shore gantry crane and a 50 tonne multipurpose crane, which can be used for container handling in addition to the gantry crane. There is a dedicated double ramp for loading SECUs (Stora Enso Cargo Unit). The Port of Oulu is now the leading container port in the Bothnian Bay as well as the biggest unitary handler in the Barents region.

North Quay, with two berths, one ro-ro ramp and a depth alongside of 10.0 metres, is used for loading reels, pallets, pulp and containers.

Main Quay, with three berths and a depth alongside of 9.0 metres, is used for loading reels, pallets, pulp and sawn timber and for loading and discharging containers and general cargo. The quay has a ro-ro ramp.

West Quay, with one berth and a depth alongside of 12.5 metres, is used for sawn timber and it's capable of handling a wide variety of dry bulk cargoes.

Oritkari has several warehouses with a total capacity of 93,000

square metres. The harbour has 85,000 square metres of open storage as well as 500 square metres of bonded covered storage.

Nuottasaari

Nuottasaari Main Quay, with two berths and a depth alongside of 6.4 metres, is a specialised quay for handling raw materials and products on behalf of the paper industry. The quay is used for loading pulp and for discharging chemicals, salt and timber.

Nuottasaari Chemical Quay 2, a depth 10 metres, is a specialised quay for handling bulk chemicals.

Total quay length is 395 metres in Nuottasaari.

Vihreäsaari

Vihreäsaari is a modern bulk harbour capable of handling a wide variety of dry and liquid bulk cargoes.

Liquid bulks handled at Vihreäsaari include imports of refined

oil products and exports of formic acid.

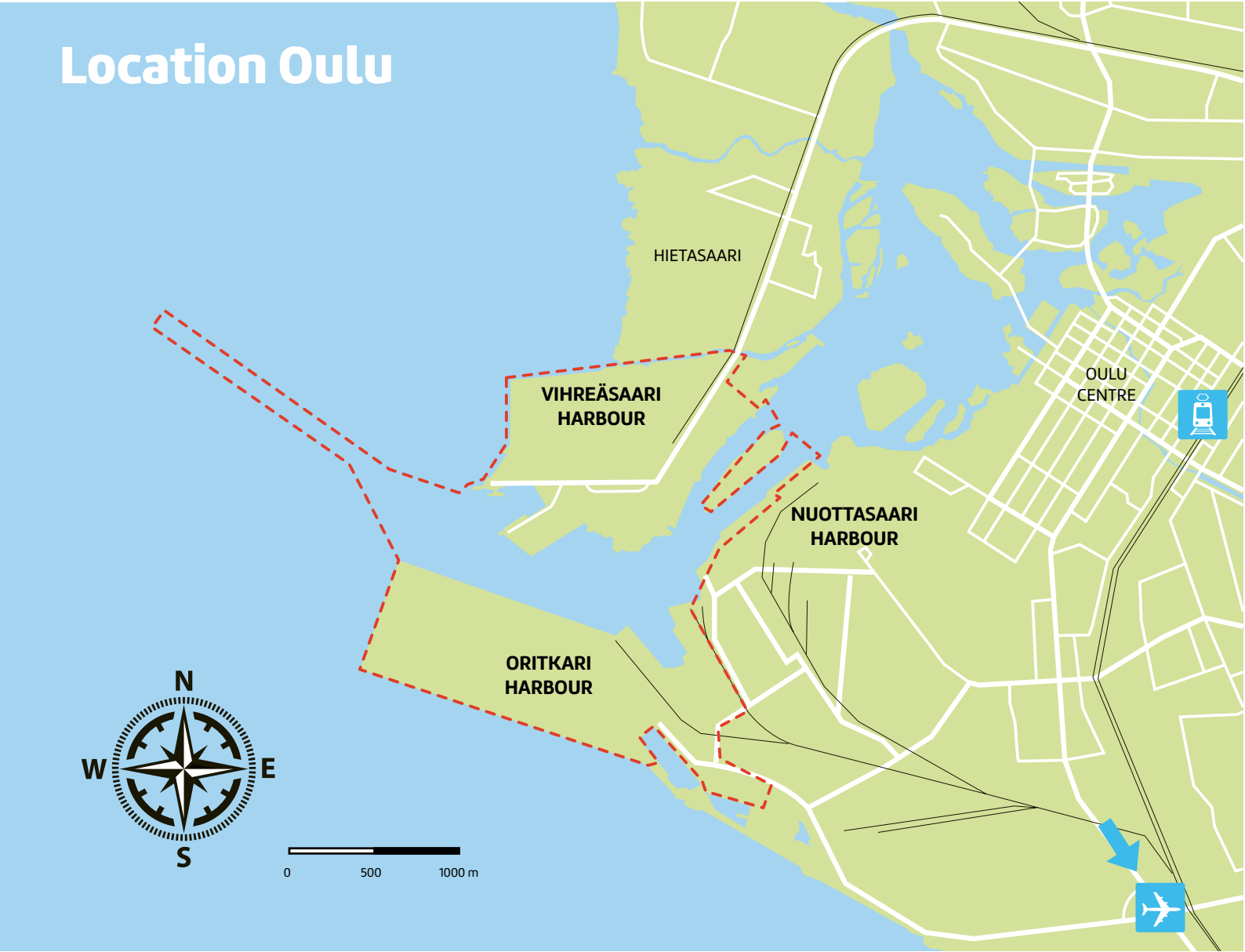
Vihreäsaari has a total quay length of 222 metres with 10.0 metres depth alongside.

Internal and external investments in the Port of Oulu

An increase in vessel size is a common trend today, seen both in the Baltic and in global shipping. For the Port of Oulu, this calls for a deeper fairway.

Investments of Port of Oulu also attract others to invest in the area. At the moment, construction of a new logistics centre next to the port entry gates is perhaps the most interesting project financed by an external investor. The Port of Oulu wants to engage in continuous interaction with its clients. The Port wants to know clients' needs for change and be at the forefront of development to meet their requirements.

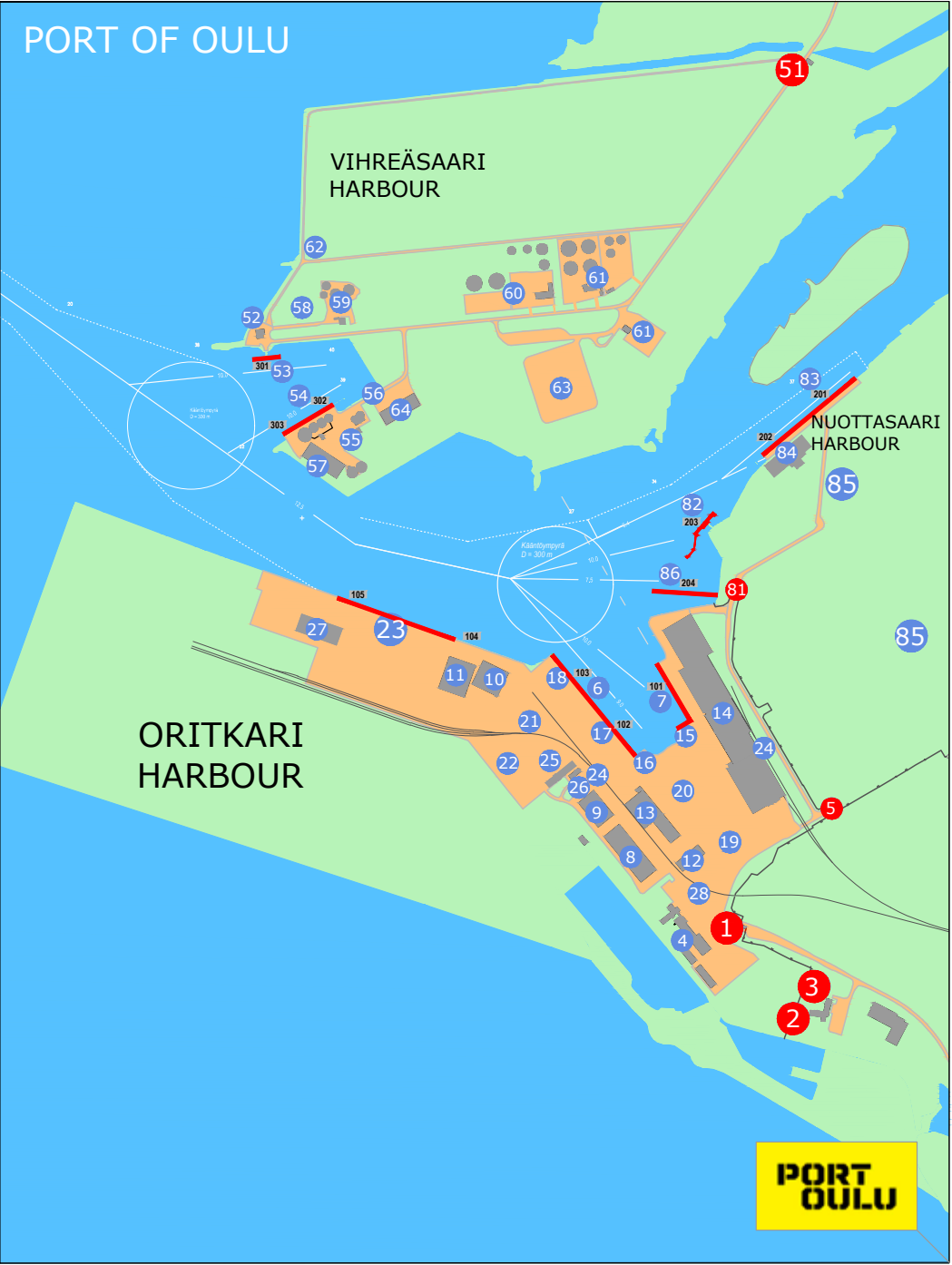
Location Oulu



- ORITKARI HARBOUR**
- 1. Main gate, access control
 - 2. Oulu Port office
 - 3. Customs
 - 4. Herman Andersson Oy
 - 5. Gate (Stora Enso)
 - 6. Main quay, draught 9 m, (102,103)
 - 7. North quay, draught 10 m (101)
 - 8. Warehouse 10
 - 9. Warehouse 11
 - 10. Warehouse 12
 - 11. Warehouse 13
 - 12. Warehouse 4
 - 13. Warehouses 2-3, bounded warehouse, warm container warehouse
 - 14. Warehouses 5-8
 - 15. Loading ramp, RoRo ramp
 - 16. RoRo ramp
 - 17. Ship to shore container crane, 50 t
 - 18. Multipurpose grane, 50 t
 - 19. Container field
 - 20. SECU container field
 - 21. Container field for hazardous goods
 - 22. Container field
 - 23. Western quay, draught 12.5 m, (104,105)
 - 24. Railway yard
 - 25. Seamen's mission / Servicehouse
 - 26. MC Containers
 - 27. Rauanheimo Oy, Warehouse 17
 - 28. Truck parking lot

- VIHREÄSAARI HARBOUR**
- 51. Vihtreäsaari gate, access control
 - 52. Service house
 - 53. Oil jetty, draught 10 m, (301)
 - 54. Bulk quay, draught 10 m, (302,303)
 - 55. BB Logistics Oy, office
 - 56. Finnsementti Oy
 - 57. BB Logistics Oy, warehouse
 - 58. EASTMAN Oy
 - 59. Wibax Tank Oy
 - 60. NEOT Oy
 - 61. Oy Teboil Ab
 - 62. Windmills
 - 63. Oulu Energia storage field
 - 64. BB Logistics Oy, warehouse

- NUOTTASAARI HARBOUR**
- 81. Gate to Nuottasaari harbour (Stora Enso)
 - 82. Chemical jetty 2, draught 10 m, (203)
 - 83. Main quay, draught 6.4 m, (201,202)
 - 84. Warehouse, talc
 - 85. Stora Enso Oulu Mill
 - 86. Chemical jetty 1, draught 7.5 m (204)



Download from Appstore!
PORT OULU Smarter. -application was built to collect and share the operational data in Port of Oulu. Our port operators, visitors and customers are welcome to log in and join our digital services. By connecting with each other, we will be able to improve the situational awareness and safety & security of the port area. Welcome to the digital Port of Oulu!



Cool city, hot business

Oulu, with its 250 000 inhabitants, is the fastest growing region in the Nordics and an international business city full of opportunities. As the biggest city in a vast northern region, Oulu is also an excellent portal for the increasing Nordic investments. The strong diverse hi-tech industrial base is supported by 18 500 experts in ICT, life science and cleantech business sectors. Oulu is also an international research and development centre with 25 000 students at two universities.

The collaboration between companies, the public sector and the universities is intensive, so the city bustles with innovations and opportunities. Oulu is an efficient gateway to the entire northern Scandinavia – an area that will set the stage for substantial development and growth within the next 10 years. Almost 200 billion euros will be invested in the development of Arctic Europe – northern Finland, Sweden, Norway and Russia – by the year 2025. This will provide a long-term boost for the entire region's economy.

The logistic service network and transport system can serve the versatile needs of modern business. We have excellent connections and diversified logistics services, which benefit the business of northern areas in Finland, Sweden, Norway, and Russia.

More than just hi-tech

The emphasis in northern Finland is especially on energy, natural resources and logistics. The versatile ICT knowledge in the region provides useful tools for developing cleaner industries. Oulu's specific areas of expertise include diversified energy production, smart energy solutions, emission control systems and resource efficiency. Products from Oulu are used all over the world: for purifying exhaust fumes in Hong Kong and cleaning wastewaters in European beach resorts, for smart lighting solutions at gas stations in Finland and reducing greenhouse gas emissions in Hungary, and for generating green energy in France.



Oulu boosts your business:

- frontline know-how in digitalization
- 50 years expertise in wireless technology
- innovation platforms and living labs
- Oulu Innovation Alliance brings together research institutions, businesses and public sector organizations
- hot investment areas: 5G development, IoT, AR/VR, AI, health solutions, printed intelligence, gaming and cleantech
- vibrant city with educated, young people

BUSINESSOULU, owned by the City of Oulu, is the driver of business and industries in Oulu region with the ultimate goal of creating new jobs. The collaboration between companies, public sector and universities is intensive, so the city buzzes with innovations and opportunities.

More information:

Jyrki Kemppainen

Key Account Director, Trade & Services, Travel and Logistics

+358 44 499 3296

jyrki.kemppainen@businessoulu.com



OULU | *BusinessOulu*

TRANSPORT KINNUNEN OY

– With over 70 years of experience



Transport Kinnunen is a family-owned company running in the third generation. Company is founded in 1949 and based in Oulu, Capital of Northern Scandinavia. Kinnunen operates in Finland, Sweden, Norway and Middle-Europe. Transport Kinnunen is part of network whose competence, skills, seamless cooperation and unified practices ensure high productivity and a competitive edge for customers.

Kinnunen's environmentally friendly fleet offers solutions for varied transport needs from containers to highly challenging special transport projects. Services include wide range of containers transports, which include sideloader services. Kinnunen's services also include ADR- and bulk transports.

Company has ability to adapt quickly to new or changing customer needs and requirements by expanding the fleet or modifying it even at short notice. New high capacity trucks and real-time vehicle tracking system ensures that transportation can be carried out safely and cost-efficiently.

Quality, reliability, determined and customer-oriented service have always been company's guiding principles. These principles combined with reliable fleet and professional staff have ensured the business's success, continuity and profitability.

The company's social responsibility, safety standards and ethical operations are reflected in its HR policy, and long-term cooperation in various networks.



- Container Transport
- Oversized Load Transport
- ADR Transport
- Dry cargo
- Sideloader services

TRANSPORT
KINNUNEN

For more information:
www.kuljetuskinnunen.fi
sales@kuljetuskinnunen.fi
+358 40 583 2243



Your partner
in port logistics

VR TRANSPORT

Logistic hub
and gateway
to Europe



PORT
OULU
www ouluport.com



NTG Air & Ocean
Nordic Transport Group



NTG AIR & OCEAN OY in Finland is part of Nasdaq OMX listed NTG Nordic Transport Group A/S, which offers a wide range of transport services to/from around the world. The Group was founded by Jørgen Hansen in 2011 with the goal of creating one of Europe's leading transport companies via partnerships with the most highly skilled players in the business. Now, just ten years later, the Group has delivered outstanding growth and having 100 offices in 26 countries and 1500 employees.

NTG Air & Ocean Oy is having its offices in Oulu and Vantaa. NTG Air & Ocean Oy isn't like everybody else – and we are not trying to be. We are entrepreneurship driven, very strong local service provider who knows the needs of the customers thoroughly. We'll not lose the flexibility or focus on the smallest customer or even the smallest detail in our business. And as a customer at NTG Air & Ocean Oy you will always feel that there are people behind everything we do. Our personnel makes you feel comfortable knowing that everything is taken care of.



From left to right: Hilja Tasala, Jukka Limingoja and Tiina Hänninen.

Oulu, plays important part of our growth strategy in Finland. We have full operational team established and we have high competence in Ocean, Rail and Air freight. Our Oulu customer service team take pride in bridging the gap between our customers and the rest of the world.

At NTG, we strive to provide an end-to-end freight forwarding solutions through our easy-to-use digital TMS platform and given accessibility to our customers and vendors with 24/7 track and trace status update.

We work to give our customers access to the most eco-friendly transport solutions possible, and we maintain ongoing dialogue with our suppliers to limit resource consumption, greenhouse gas emissions and environmentally harmful substances. To set clear goals for the environmental efforts, NTG has initiated an ISO 14001: 2015 certification.

The key to our success is that you as a customer can expect shipments and quality service, every time you deal with us. Quality assurance and continuous improvement of all our activities are a mainstay of the company.

NTG will continue to aspire for increased excellence in our operations and believe that ISO 9001:2015 certification provides evidence that we are committed to ongoing improvement and ultimately success for our customers and our organization.

We live with tight deadlines and work with scheduled delivery times every single day, so we are used to reacting quickly. We only focus on your transport, and therefore our personal service and the speed of our response to you is what is most important.

We want to be your preferred transport company. The one you choose when buying transport solutions. And the workplace you would most like to be part of if you work in the transport sector. We achieve this by maintaining our people-centric focus in everything we do. Always.

**Most valued
logistics
partner**



Global Transport and Logistics

DSV was founded in 1976 when ten owner-operated hauliers joined forces and established DSV. Since then DSV has gone through several acquisitions becoming the world's fourth largest transport and logistics company.

DSV Panalpina A/S is listed in Denmark and among the 25 most traded shares on Nasdaq Copenhagen. The annual turnover of DSV Panalpina A/S is approx. 15 Billion euros and we employ over 55.000 logistics professionals world-wide, of which approximately 400 in Finland. DSV have own offices in more than 90 countries and together with our international network of partners we operate in over 120 countries.

Our three divisions provide one-stop shopping

DSV is organised into three divisions offering the complete range of services to support our customers' entire supply chain:

- Air & Sea – transportation by air, sea, rail and multimodal services
- Road – transportation by road
- Solutions – warehousing and logistics services
- DSV's competitive sea freight services are your best choice

We can offer you competitive rates, frequent departures and the capacity you need – to and from every major port in the world.

Local knowledge of local conditions

In every major port, we have experienced employees with detailed knowledge of local and international export and import compliance. Our staff can assist you in understanding each country's requirements, as well as local pickup and last mile delivery. And if you need logistics support or warehouse management for your supply chain, we can handle that too.

Our sea freight services include:

- Full container load
- Less than container load
- Non-containerised load
- Buyer's consolidation services
- Break bulk
- Project deliveries

Sea freight compliance

Moving cargo from A to B across the world's seas is challenging. Transport documents, regulations, country-specific compliance, local requirements and customs clearance are just some of the steps to be considered before your cargo can be dispatched. With years of experience, our staff can support you in delivering your sea freight in full compliance with all requirements.

DSV's global network at your service

1,400 offices, terminals and warehouses across the world enable us to be close to our local markets while taking advantage of a global perspective and network to secure the best possible service at highly competitive rates.

From the beginning, the story of DSV has been a story of entrepreneurs with great business acumen and the courage to embark on a journey of continued growth. The DSV values remain deeply embedded throughout our global organisation.

More information: www.dsv.com/fi



Global Transport and Logistics

EVERY
THING
you need for
LOGISTICS
goods
transport
handling
storage



BBLOGISTICS.FI



Terminals: Kemi-oulu-kaskinen-pori-haminakotka

BB Logistics began providing logistics services in 1991 at the port of Kaskinen. The company operates and provides a diverse range of port storage and transport services to customers. "We are always available for our customer. No matter day or night. Always ready to solve almost impossible tasks."

Employees are assets

There is no doubt about the fact that the human asset is the key intangible asset for any organization. "People are definitely a company's greatest asset. It doesn't make any difference whether the product is cars or bulk. A company is only as good as the people it keeps."

BB Logistics operates at five Finnish ports: HaminaKotka, Kaskinen, Kemi, Pori and Oulu (Vihreäsaari and Oritkari).

Efficiency

The highest rate of product flow is always our target. We work in dusty, cold, wet and warm environments. It does not matter, we always manage and do our best. An amateur is the one that need to find methods to survive other than doing his job. A professional is the one that keep on doing his best even if the sun is not shining and has all the odds against him. The last one is us.

We can do it

Transport services to customers such as bioenergy producers and users, as well as industries including food. Animal feed, paper, construction, chemistry and metal. "Successful company don't just do things differently than everyone else around them – they think differently than everyone else around them".

Storage

Our terminals offer storage capacity with 150.000 m² of warehouse space, 130.000 m³ of bulk tank space and 40.000 m³ of liquid tank space and highly flexible services. Many of the warehouses have direct rail access. Weighing services are available at all of our port terminals.

BB Logistics is one of the seven companies in Finland who has EFISC-GTP certificate.

BB Logistics quality and work safety program has decreased the accidents to minimum (ISO 9001 and 45001).

BB Logistics' motto is – Safeway or noway – We monthly monitor our safety program and we develop together with our customer a better tomorrow.



PORT OULU Smarter. CO-CREATE THE FUTURE WITH US

The Finnish city of Oulu is the logistics center of Northern Europe. The Port of Oulu is a junction for sea, rail and road traffic, enabling efficient transportation to all of northern Scandinavia and to Russia. A so-called multi-operator environment poses a unique challenge for the port that handles three types of traffic. Operators vary from stevedores, pilots and icebreakers to waste management and maintenance as well as the Finnish Customs and other authorities. They all need to work seamlessly together. That is why the Port of Oulu is investing in its digital infrastructure.

- Port of Oulu has created a future-oriented roadmap to guide all digital development. Among other ventures, the port is currently working on PORT OULU Smarter. –mobile application that is becoming a daily tool for port operators and visitors – using a modern port data platform to house data on port operations. These initiatives play into the goal of making the logistics flows more efficient and reliable, and the port area more safe and secured. You are welcome to download the PORT OULU Smarter. –app from application store of your phone.

- The Port of Oulu is building and developing local network solutions for the port area's multi-functional environment. The port company manages the Private LTE network capacity sold as-a-service to enterprises and local actors operating in the premises. The private network utilizes the 2.6GHz broadband spectrum allocated on the port area. The network investment

enables innovative, modern and secure digital smart port services for customers and partners alike. Cranes, lifts and other stevedoring fleet must be reliably connected to receive and transmit data during cargo operations.

- Port of Oulu is building up a cloud-based Port Data Platform, where the port stakeholders are connected using data as a glue. Collecting, enriching, analyzing and sharing port data is enabled by the most modern connectivity and application technologies. The real-time data improves the situational awareness for everyone working and visiting the port area, and the history data is utilized to predict and plan the future actions. Different type of data is modelled and simulated in a dynamic and interactive 3D Digital Twin – which is visualizing the port operations in a very comprehensive way.

- Port of Oulu has chosen to be an active partner for various commercial and academic technology cooperation projects. This will ensure that the upcoming technological improvements can and will be utilized for the benefits of port's customers, operators and visitors. Combining secured connectivity solutions, and smart digital port services will play a key role when welcoming the first automated and autonomous vehicles into the port area in the near future.

Follow the latest news on the progress of the PORT OULU Smarter. digitalisation project www.ouluport.com



DHL Global Forwarding – reliable and forward-thinking

DHL Global Forwarding is the air and ocean specialist of Deutsche Post DHL Group. Our air and ocean freight forwarding services include standardized transport as well as multimodal and sector-specific solutions, together with individualized industrial projects. With our broad product range we cover different equipment types and consolidation services to ensure your cargo reaches the right place, at the right time in a cost-efficient way. Our global network allows us to offer efficient routing and multimodal transport. Our on-the-ground presence in over 190 countries, over 60 national gateways and 9 multinational gateways mean we are where our customers and their cargo need us.

In Finland, DHL Global Forwarding operates ocean freight forwarding services through all the main container ports. Strong and well-functioning Port of Oulu supports our objective to provide Finnish companies throughout the country with competitive, easy-to-use ocean freight services.

Truly climate neutral ocean freight shipments without additional costs

DHL Global Forwarding started neutralizing the carbon emissions of all less-than-container load (LCL) ocean freight shipments globally from January 1, 2021. Finland is proud to have kicked off the carbon-neutral LCL service for its customers one year ahead of the rest of the world. As one of the leading ocean

freight forwarders worldwide, and in line with Deutsche Post DHL Group's "Mission 2050 – Zero Emissions", DHL is committed to lead the transition to clean and sustainable sea freight transport. The CO2 compensation for all LCL shipments will be achieved by using maritime biofuels, utilizing existing and new partnerships.

DHL Global Forwarding's new green service also helps customers reduce their carbon footprint. At no extra cost to the customer, the heavy oil that would ordinarily be used is replaced with sustainable marine biofuel onboard a preselected container vessel. In this way, true carbon neutralization is achieved. The CO2 reduction benefits are allocated to the customer. In addition, DHL Global Forwarding has a GoGreen carrier evaluation program, which allows us to give preference to carriers with strong environmental performance.

Even though we are in unprecedented times, we want to make sure that climate protection and sustainability efforts remain at the forefront – for a sustainable future.

<https://www.dhl.com/fi>





Herman Andersson Oy, a versatile and customer orientated port operator



With an experienced team of 90 professionals and tradition of port operations since 1902, Herman Andersson Oy is the main provider of terminal and stevedoring operations in Port of Oulu.

Company offers a wide range of terminal services from warehousing to stuffing and stripping of all kind of cargo units and to loading and unloading of trucks and railway cars.

Regarding stevedoring Herman Andersson Oy handles ISO -containers, SECU -boxes, cassettes, mafis and trailers as well as break bulk and bulk cargos with it's modern fleet of 65 machines.

Herman Andersson Oy acquires crane services from it's partners; Port of Oulu regarding container cranes and Fin-Terpuu Oy regarding mobile cranes.

Company's terminal is open 24/7 all year round, which offers an excellent service to all shippers and haulers delivering cargo to/from port.

Herman Andersson Oy offers also 24/7 ship's agent service to owners and charterers.

More information: www.hermanandersson.fi



About the company

Oy M. Rauanheimo Ab was founded in 1884 and is today one of Finland's leading port operators. Rauanheimo offers services in stevedoring, forwarding, ship agency services, transit services, customs service, container services and general cargo handling. The company also offers added-value services such as transports, handling of the goods at departure and arrival, documentation of the entire chain and customs clearance. Rauanheimo designs competitive logistics solutions that will save customers time and money by combining different services for the customers' needs. Rauanheimo belongs to the versatile business group KWH Logistics that is part of the strong KWH Group.

Using its ability to adapt, change and chase new challenges, Rauanheimo has undergone significant growth in recent years

and has operations in Oulu, Kokkola, Tahkoluoto, Koverhar, Vuosaari, Loviisa, Hamina, Kotka, Tornio and Rahja as well as significant operations in Russia. Close collaboration with customers allows Rauanheimo's dedicated team of professionals to develop tailored solutions that add genuine value to our customers' logistics chains.

Rauanheimo is a dependable partner thanks to three basic principles that have remained unchanged for the last 137 years: family culture, expertise of employees at every operational level, and focus on the customer. Rauanheimo is strategically expanding operations in Finnish ports, allowing them to serve customers in the areas of the customer's choice.

Rauanheimo offers a comprehensive service, comprising

storage, terminal, and stevedoring solutions in Oulu since 2018. The company offers storage in a 5000 m² warehouse they built in 2018, which can be divided into smaller areas, shelves constructed, and the space heated, all depending on what the customer wants. The number of warehouses and machinery are expanded, developed, and tailored according to customer needs. Rauanheimo is a market leader in transit traffic and offers fast and flexible service through Oulu. Border crossing and ship loading can be managed on the same day.

Feel free to contact Rauanheimo, all the contacts can be found at www.rauanheimo.com. Rauanheimo creates success stories together with customers.



THE FINNISH SEAMEN'S MISSION

With you at home and abroad

The Finnish Seamen's Mission is a neutral non-profit association, whose mission is to be the church and meeting place for moving people. Abroad you will find us in Athens, Brussels, Hamburg, London, and Rotterdam. In Finland you will find Finnish Seamen's Mission in Kemi-Tornio, Oulu, Kokkola, Rauma, HaminaKotka, Turku, and Vuosaari (Helsinki).

The Seamen's Mission is a living room where everyone is respected and is listened to individually. Essential to our activities is getting people together. Come as you are – no membership card or church affiliation will be requested. With us, you can feel at home, be yourself among other people.

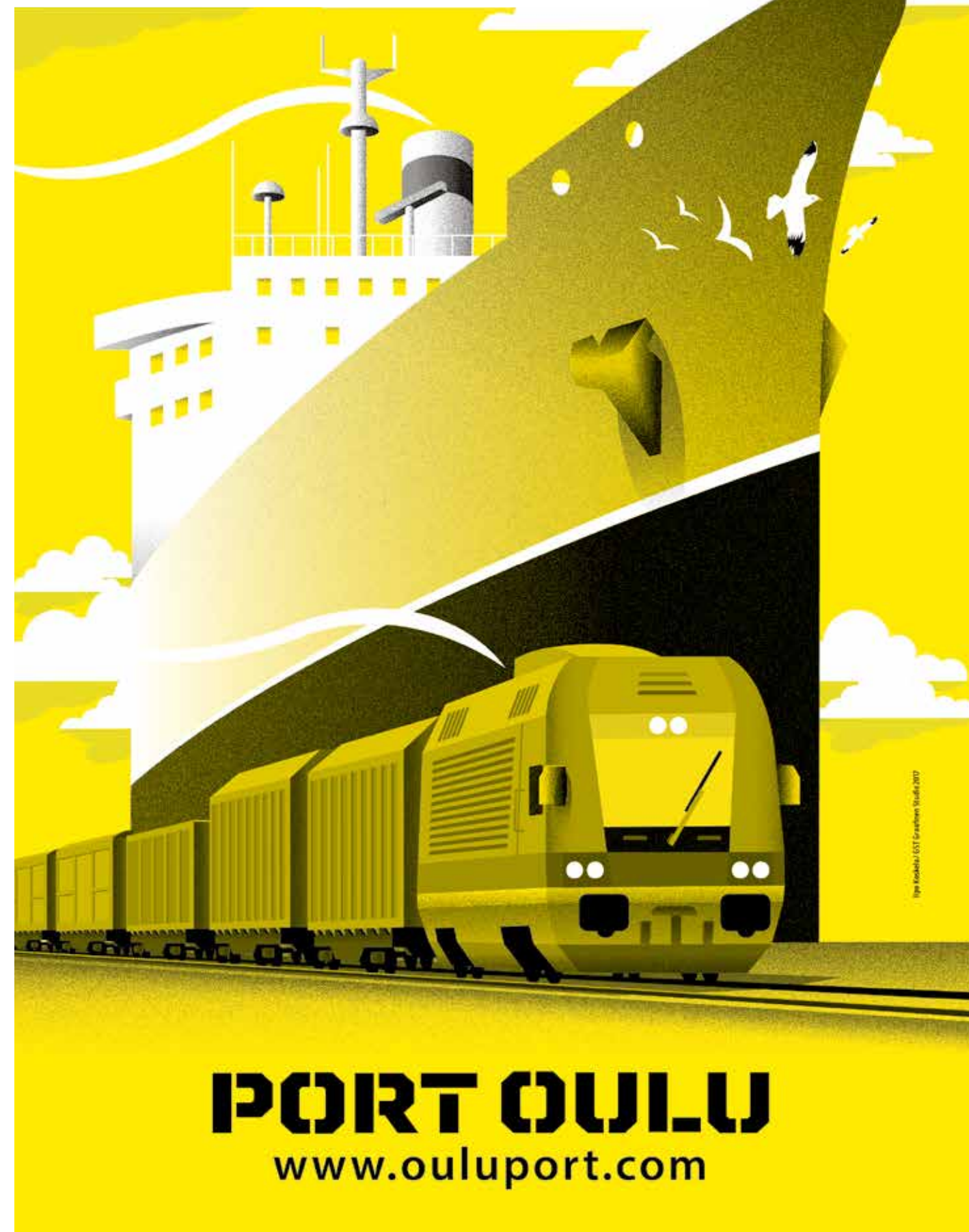
Depending on the establishment, there are canteens, a coffee shop, a tax-free shop, a reading room, a library, billiards, table tennis, satellite television, Internet, telephone, shower bath and transport and guide services, meeting premises, excursion activities, visits aboard, informational events and so on.

Each branch of the Finnish Seamen's Mission is a unique "living room" and activity centre. In Oulu there is a small canteen where you can by refreshments, small necessities and souvenirs. In addition to phone cards and free WiFi is available.



Visiting address: Poikkimaantie 4, Fin-90400 Oulu
Open: Mon-Fri
Port Chaplain / on-board Sailing Chaplain :
Ms Mia Haapakorva, Tel: +358 400 371 574
e-mail: oulu@merimieskirkko.fi, www.merimieskirkko.fi
also WhatsApp works

Northern Gateway – Multipurpose Port of Oulu





MC CONTAINERS

wherever you are

About us

We are your personal partners when it comes to any kind of container matter wherever you are in the world. When you work with us, you will get a fast and professional service with over 15 years of experience. Our customers always comes first, which is why you can leave all your container worries with us and focus on your core business without any stress. Whether you are a big company, a small startup, or an individual, we are here to serve. Our services include leasing and selling containers, manufacturing special units, and transporting.

Our company values fast and reliable services that you can count on without any extra hassle. We operate from three head offices throughout Europe and supply containers from over 80 depots around the world. Globally we go by the name MC Containers, but in Finland where our roots are located, we are known as Konttivuokraus Oy. Local know-how is always given to you without asking and that, combined with family company values make us your number one partner for container related matters.

WHAT DO WE OFFER?

Our operations cover a lot more than the lease and sale of a container. Since 2004 we have been serving our clients with var-

ious container and logistic related matters. We repair containers, provide depot services, warehousing, packaging, and forwarding, plus a whole lot more! You can say that our service range covers everything you need for containers and logistics locally and globally. We are ready to help you with your project 365 days of the year.

One-way and capotage container

Our one-way lease and buy-back services allow you to rent or buy a container from any MC Containers depot around the world and return it to another depot after your project has been completed. Avoid missing out on containers, fix your project budget and save money with our one-way and buy-back service from one of our 80 depots that has 1000+ containers. We give the container on nominated depot and agree to buy it back on agreed location with fixed price.

For shipping lines and forwarders, we offer Capotage containers on various routes. We can provide capotage units from all major container ports in the world with re-delivery even to smaller ports.

Depot and Warehouse Services

Our depots in Finland and Sweden offers various services for companies and individuals. We offer storage, warehousing and maintenance services around the Nordics. Depots are equipped with empty container handling machines and special equipment for lifting can be arranged from our partners.

Oulu, Finland

- Address: Poikkimaantie 4, 90400 Oulu, Finland (Port of Oulu)
- 4,500 m² concrete container depot with electric outputs for reefers and machines
- 24/7 secured and closed area
- 1,700 m² hall with lifting doors
- Loading deck
- Forklifts and container handling machines
- Suitable for containers and bulk cargo / special equipment.
- Reefer repair under Carrier and Thermoking Dealership, PTI, wash
- Container repairs, cleaning
- Stuffing
- Local deliveries and shipping worldwide by our Hamburg International office

Vihti, Helsinki

- Address: Vinkkelitie 7, 03250 Vihti, Finland
- Concrete container depot with electric outputs for reefers and machines
- Secured and closed area
- 1,000 m² hall with sliding doors
- Forklifts for handling cargo (heavy equipment can be arranged)
- Suitable for containers and bulk cargo / special equipment.

- Container repairs, cleaning
- Stuffing
- Local deliveries and shipping worldwide by our Hamburg International office

Gothenburg, Sweden

- Address: Holmvägen 75, 41746 Göteborg, Sweden
- Private yard for container storage
- Forklifts and container handling machines (empty only, loaded on request)
- Suitable for containers and bulk cargo / special equipment.
- Washing and cleaning of containers

Container Leasing

Our leasing service offers companies and individuals solutions for every need, starting from 7 day short term lease for specific case up to 5 year Master lease deals. Our fleet consist of ISO shipping containers, Reefers, Tank Containers, office containers, storage units and special equipment.

Lease fleet

- ISO Shipping containers
- Office modules
- Special equipment like glass containers and waste units
- Tank Containers
- Reefers



Container Sales

We sell almost every container in the world. Ranging from small 6ft storage container to 45HCPW Reefers. Containers are available worldwide from our 80 depots. Our sales agents will organize you transport locally or we can ship them to your preferred location.

Special containers

Are you looking for a special container or a modified container? If yes, you've come to the right place. We're a team of container experts that both design and manufacture special containers to meet a variety of needs worldwide. We have worked with individuals and businesses around the world to help them meet their needs, which has ranged as modified containers for office space to special containers for battery storage.

We have a 24-hour reply policy, so we guarantee that one of our container specialists will contact you within this time to help you find the perfect solution. Once we've initiated contact, our special container design team will provide you both a draft plan and a budget. We pride ourselves on our service and high quality containers, which is why we offer a free non-binding plan until you have formally ordered the modified container of your choice.

Some samples we have modified and built

- World first mobile ski service container
- Ammunition storages
- Machine rooms
- Military containers
- Laboratory containers
- Water reservoir containers
- Hazardous waste containers
- Showrooms
- 200 person office spaces
- Modified cold room from reefers

Project cargo

We're proud to offer all our clients the perfect transport solutions for bulk cargo and general cargo when it comes to cost and reliability. We offer not only the transportation of shipping containers, but we also transport and ship bulk and general cargo. Once you agree on the estimate costs, we'll quickly transport the container to the agreed drop off point. When transporting break bulk and containers, we'll always create a transport plan, which outlines the client's different container delivery options. All international transports are handled by our Hamburg office where our crew have over 20 years of experience on project transports.

Also, when transporting and delivering shipping containers abroad, we take care of all the necessary paperwork, including the customs declarations. We also package containers if needed. We have an extensive international network or partners worldwide, which allows us to offer you a reliable and cost-effective service.

Our container transportation services work well in conjunction with our One-Way Service, which will save you a considerable amount of time and money. We offer an excellent logistical container service package that covers the following types of transport worldwide:

- Sea transport
- Railway transport
- Airfreight
- Road transport
- Crane transport
- Container transport

MC
MCCONTAINERS
wherever you are





The port in detail

Location: The port of Oulu is located in position 65°00' N, 025°24' E on the Gulf of Bothnia in northern Finland. Oulu is 610 km north of Helsinki.

Authority: Port of Oulu Ltd – Oulun Satama Oy, Poikkimaantie 16, 90400 Oulu, Finland. www.ouluport.com

Approach: There are two approach channels, one with 10.0 metres depth and another with 12,5 metres depth: via Kemi or via the lighthouse.

Accommodation: The port covers a total land of 255 hectares and consists of three harbors: Oritkari, Nuottasaari and Vihreäsaari.

Oritkari is a general cargo harbor with a total of quay length of 843 meters. It has facilities for handling ro-ro, sto-ro and container traffic. There are three quays:

North Quay has one berth of total length 170 metres with 10.0 metres depth alongside. It is used for loading reels, pallets, pulp and containers. The quay has a ro-ro ramp.

Main Quay has two berths of total length 343 metres with 9.0 metres depth alongside. It is used for loading reels, pal-

lets, pulp and sawn timber and for loading/discharging containers and general cargo. The quay has a ro-ro ramp. There is a multipurpose 50-tonne crane equipped to handle containers and a 50-tonne ship-to-shore container crane with an outreach of 32 metres.

West Quay has one berth of total length 330 meters with 12.5 metres depth alongside. It is used for mainly for loading sawn timber and it's capable of handling a wide variety of dry bulk cargoes.

Oritkari has 13 warehouses: owned by the port authority and operators: Herman Andersson Ltd, MC Containers Ltd and Rauanheimo Ltd. Total capacity is 70,000 square metres. The harbor also has 51,100 square metres of open storage and a 500 square meter bonded warehouse.

Nuottasaari is a specialized quay for handling raw materials and products in connection with the pulp industry. Total quay length is 482 metres and depth alongside is between 6.4 metres and 10 metres. The Nuottasaari quay is used for loading pulp and for discharging chemicals and salt. There is also one chemical berth for discharging chemicals and other

products.

Vihreäsaari is used for discharging oil products and dry bulks. There is one oil berth and one dry bulk berth. Total quay length is 222 meters with 10.0 meters depth alongside. The Harbor has 27,000 square meters of open storage. There is 40,000 cubic meters of warehousing for dry bulks.

Airport: Oulu Airport at Oulunsalo, 15 km from the city center, has frequent flights to Helsinki.

Anchorage: Good anchorage in the roadstead.

Bunkers: All types of fuel supplied by NEOT Oy and Oy Teboil Ab.

Cranes: Oritkari has a 50 tonne multi-purpose crane equipped for container handling and a 50 tonne ship-to shore container crane.

Emergency: Call number 112

Hospital: Oulu University Hospital is close to the port.

Largest vessel: Maximum of 65,000 dwt, 230 meters long and 12,5 meters draught.

Lloyd's agent: Herman Andersson Ltd, Poikkimaantie 12, FIN-90400 Oulu, (P.O. Box 37, FIN-90401 Oulu)
Tel: +358 8 3150 100 Fax: +358 8 371 743

Pilotage: Pilotage is provided by Finnpiilotage Ltd and is compulsory for all foreign vessels. Marjaniemi Pilot Station can be contacted on: Tel: +358 (0) 400 907 979 Fax: +358 (0) 29 52 53012

Radio information: The port operates on VHF Channels 12.

Rail links: The port is linked to the national rail network. Oulu railway station is 5 km from the port.

Road links: Excellent local and national road infrastructure. The north-south E75 highway is 1 km from the port, providing ready access to northern destinations and to Helsinki and the south. The whole of north-east Finland can be reached by truck within one day.

Ro-ro facilities: Two berths of 30 and 40 meters width with depths alongside of 9.0 meters and 10.0 meters.

Seamen's mission: There is an international seamen's mission in Oritkari harbor

with leisure facilities, shop, telephone, post box, free Wi-Fi, etc. The mission is open weekdays from 6pm to 10pm and also during the day if required. Email: oulu@merimieskirkko.fi

Ship repair: Machine work-shop, ship repair and welding services are provided Sah-ko Oy, Alasintie 1, 90400 Oulu.
Tel: +358 8 882 6888
Fax: +358 8 882 6800

Repair and maintenance services for containers: Oulun Konttivuokraus Oy / MC Containers, Poikkimaantie 4, 90400 Oulu. Tel: +358 400 890 732, +358 8 41 5416 05, info@konttivuokraus.fi

Storage: A total of 62,400 square meters of warehousing plus a 500 square meter bonded warehouse are available in the Oritkari Harbour. The Vihreäsaari Harbor has 40,000 cubic meters of covered storage.

Tides: There is no tidal variation in the Gulf of Bothnia.

Towage: The icebreaking tug 'Tuura' is available from R-Towing Oy
Tel: +358 400 256 517

Waste: Notification of ship-generated waste and cargo must be submitted to Port Control no later than 24 hours before ship's arrival at Port, or immediately upon departure from the previous port of call, if travel time is less than 24 hours.

Weather: The port is open all year round. Icebreakers are used to keep approach channels free between mid-December and end March/early April.

Working hours: Stevedores work Monday to Friday, 07.00 to 24.00 and Saturdays 07.00 to 15.00. Cranes and port services are available 24 hours a day.

Useful Addresses

Finavia Oyj Oulu Airport

PL 33, Fin-90461 Oulunsalo
Tel. +358 20 708 7800
www.finavia.fi

Finnish Transport Infrastructure Agency – VÄYLÄ

P.O. Box 33, Fin-00521 Helsinki
Tel. +358 295 34 3000
www.ftia.fi

Finnish Transport and Communications Agency –TRAFICOM

P.O.Box 320, Fin-00059 Traficom
Tel. +358 29 534 5000
www.traficom.fi

Oulun Tulli (Customs)

Poikkimaantie 16, Fin-90400 Oulu
Tel: +358 295 5200
www.tulli.fi

Seamens Mission Oulu

Poikkimaantie 4, Fin-90400 Oulu
Mia Haapakorva, Port Chaplain, Manager
Tel +358 40 037 1574
Email: oulu@merimieskirkko.fi
www.merimieskirkko.fi

Oulu Chamber of Commerce / Oulun Kauppakamari

Technopolis Sepänkatu 20, Fin-90100 Oulu
Tel +358 50 562 9933
Email: info.oulu@chamber.fi
www.oulunkauppakamari.fi

Oulun Energia Group

P.O. Box 116, Fin-90101 Oulu
Tel: +358 8 5584 3300
email: info@oulunenergia.fi
www.oulunenergia.fi

Oulun Yliopisto – University of Oulu

P.O.Box 8000, Fin-90014 Oulun Yliopisto
Tel: +358 294 480 000
www.oulu.fi

BusinessOulu

Hallituskatu 36 A, Fin-90100 Oulu,
P.O. Box 22, Fin-90015 Oulun kaupunki
Tel: +358 8 558 10
email: info@businessoulu.com
www.businessoulu.com

Oulu City Tourist Office / BusinessAsema

Hallituskatu 36 B, P.O. Box 54, Fin-90015 Oulun kaupunki
Tel: +358 8 558 41330
touristinfo@ouka.fi
www.visitoulu.fi

Port of Oulu Ltd – Oulun Satama Oy

Poikkimaantie 16, P.O. Box 23, Fin-90015 Oulun Kaupunki
Tel: +358 44 703 2753
www.ouluport.com

Airlines

Finnair Oyj, Oulu

Lentoasema Fin-90460 Oulunsalo
Tel: 09 818 0800
www.finnair.com

SAS

Tel: +358 981710062
EBG/EBD: 24h service
www.scandinavian.net
www.sas.fi

Norwegian

www.norwegian.com

Banks & Finance

Forex Oy

Torikatu18, Fin-90100 Oulu
Tel: +358 8 784 0105
info@forex.fi
www.forex.fi

Oulun Osuuspankki

Isokatu 14, Fin-90100 Oulu
Tel: +358 10 253 5014
www.op.fi

Nordea

Kirkkokatu 6, Fin-90100 Oulu
Tel: +358 200 3000
www.nordea.fi

Danske Bank

Pakkahuoneenkatu 2, Fin-90100 Oulu
Tel: +358 200 2580
www.danskebank.fi

Säästöpankki Optia

Kirkkokatu 10, Fin-90100 Oulu
Tel: +358 29 041 2500
www.optia.fi

Handelsbanken

Kauppurienkatu 7, Fin-90100 Oulu
Tel: 010 444 3380
oulu@handelsbanken.fi
www.handelsbanken.fi

Car Rental

Autovuokraamo Budget

Oulu airport, Arrivals Hall
Fin-90460 Oulunsalo
Tel. +358 10 4362 380
email: oulu@budget.fi
www.budget.fi

Autovuokraamo Hertz

Airport, Oulu (Oulunsalo), Fin-90461
Tel. +358 20 5552 810
www.hertz.fi

Sixt Car Rental

Lentokentäntie, Fin-90461 Oulunsalo
Tel. +358 201 122 590
www.sixt.fi

Avis Rent a Car

AIRPORT, Fin-90460 Oulunsalo
Tel: +358 10 436 2380
email: oulu.airport@avisbudget.fi
www.avis.fi

Europcar Interrent

Ratakatu 11, 90130 Oulu
Äimäkuja 3, 90400 Oulu
Oulun lentoasema, Fin-90461 Oulunsalo
Tel. +358 40 306 2871
www.europcar.fi

Construction

Destia Ltd

Neilikkatie 17, P.O. Box 206, Fin-01301 Vantaa
Tel: +358 20 444 11
www.destia.fi

Destia Oy Oulu

Moreenikuja 2, Fin-90630 Oulu
TEL +358 400 289 466
www.destia.fi

Insinööritoimisto Ponvia Oy

Uusikatu 26, Fin-90140 Oulu
Tel: +358 207 4199 00
www.ponvia.fi

Insinööritoimisto Solutra Oy

Voimatie 1, Fin-90440 Kempele
Tel: +358 40 7019 454
tuomo.ojakoski@solutra.fi
www.solutra.fi

Skanska Industrial Solutions Oy

Jääsalontie 14, Fin-90400 Oulu
Tel: +358 20 719 211
www.skanska.fi

Terramare Oy

Laurinmäenkuja 3 A, B.O. Box 14, Fin-04400 Helsinki
Tel: +358 9 613 621
www.terramare.fi

Container services

Oulun Konttivuokraus Oy

Poikkimaantie 4, Fin-90400, Oulu
Tel: +358 50 300 4603
email: info@konttivuokraus.fi
www.konttivuokraus.fi

Mattson Containers GmbH

Ruhrstrasse 11 A 22761 Hamburg Germany
Tel: +49 40 37 415 040
info@mccontainers.com

Cranes

ABB Service Oy

Oulu Service Center, Oulun huoltokeskus, Konetie 27
P.O.Box 485, 90101 Oulu
Tel: +358 10 2211
www.abb.fi

Fin-Terpuu Oy

PL 7, Fin-87101 Kajaani
Tel: +358 8 6873100
http://fin-terpuu.fi/
info@fin-terpuu.fi

Havator Oy

Varikonkatu 3 95420 Tornio
www.havator.com

Hooli Oy Liftlink Oy

PO Box 70, Fin-94101 Kemi
Tel: +358 400 695518
www.hooli.fi

Konecranes Nordic Oy

Karpalotie 9, Fin-90820 Kello
Tel: +358 20 427 6200
www.konecranes.com

Crane Hire

Hongisto Oy

Kansipojantie 7, Fin-90520 Oulu
Tel: +358 400 689 655
www.hongisto.fi

Forwarding

Beweship Oy

Nuolikuja 8 01740 Vantaa
Finland
Tel +358 20 7857 500
http://www.beweship.com

Bruhn Spedition Oy

Holkkitie 14 B, Fin-00880 Helsinki
Tel: +358 9 774 2300
Fax: +358 9 7742 3030
www.bruhnspeed.com

DHL Global Forwarding (Finland) Oy

Liusketie 23, Fin-90620 Oulu
Tel: +358 20 533 11
www.dhl.fi

DSV Road Oy

Kytösavuntie 2, Fin-90450 Kempele
Tel: +358 207 388 388
www.dsv.com.fi

Herman Andersson Oy

Poikkimaantie 12, PO Box 37, Fin-90401 Oulu
Tel: +358 8 315 0100
www.hermanandersson.fi

Posti Group Oyj

Postintaival 7 A, Fin- 00230 Helsinki
Tel: +358 20 4511
www.posti.fi/

Oy Kuehne + Nagel Ltd

National Head Office Karhumäenkuja 2, Fin-01530 Vantaa
Tel: +358 201 611 611
www.kn-portal.com

OY Kuehne + Nagel Ltd – Oulu

Temmeksentie 10, Fin-90400 Oulu
Tel:+358 201 611 611

Moonway Oy

Huolintakatu 5, Fin-20200 Turku
Tel: +358 2 275 4300

www.moonway.fi

Oy Niklashipping Ltd

Metsänneidonkuja 4, P.O.Box 20, Fin-02130 Espoo
Tel: +358 9 4782 9300
www.niklashipping.fi

NTG Air & Ocean

Nordic Transport Group
Huurrekuja 2 04360 Tuusula
www.ntgfinland.com

Dachser Finland Air & Sea Logistics Oy

Poikkimaantie 16, Fin-90400 Oulu
Tel: +358 8 370 040
www.dachser.fi/
Panalpina Aktiebolag filial i Finland /DSV
Trukkikuja 3, Fin-01360 Vantaa
Tel: +358 10 820 5900
info.finland@panalpina.com
www.panalpina.com

Oy M. Rauanheimo Ab

Poikkimaantie 4 90400 Oulu
www.rauanheimo.com

Schenker Oy

Vähälä Oritkarintie 1, Fin-90400 Oulu
Tel: +358 10 520 00
www.schenker.fi

TKH-Logistics Oy

Oritkarintie 1, Fin-90400 Oulu
Tel: +358 20 1254 200
www.tkh.fi

UPS Customer Center-Helsinki

Niittytie 23, Fin-01300 Vantaa
Tel: +358 9 2311 3406
www.ups.com

Oulun Konttivuokraus Oy

Poikkimaantie 4, Fin-90400, Oulu
Tel: +358 50 300 4603
info@konttivuokraus.fi
www.konttivuokraus.fi

Hotels

Break Sokos Hotel Eden

Holstinsalmentie 29, Fin- 90510 Oulu
Tel: +358 20 123 4603
www.sokoshotels.fi

Lapland Hotels Oulu

Kirkkokatu 3, Fin-90100 Oulu
Tel: +358 8 881 1110
www.laplandhotels.com

Scandic Oulu Station

Kajaaninkatu 17, Fin-90100 Oulu
Tel: +358 8 2374 8949
www.scandichotels.fi

Scandic Oulu City

Saaristonkatu 4, Fin-90100 Oulu
Tel: +358 8 543 1000
Fax: +358 543 2211
www.scandichotels.fi
Sokos Hotel Arina
Pakkahuoneenkatu 16, Fin-90100 Oulu
Tel: +358 8 312 3111
www.sokoshotels.fi

Radisson Blu Hotel Oulu

Hallituskatu 1, Fin-90100 Oulu
Tel: +358 20 123 4730
www.radissonblu.com

Hotel Lasaretti

Kasarmintie 13b, Fin-90130 Oulu
Tel: +358 20 757 4700
www.lasaretti.com

De Gamlas Hem Hotel & Restaurant

Kirkkokatu 54, Fin-90120 Oulu
Tel: +358 75 325 7600
info(at)degamlashotel.fi

Holiday Village in Oulu

Nallikari Holiday Village A four-star Village by the sea

Leiritie 10, Fin-90510 Oulu
Tel. +358 44 703 1353
Reception: reception@nallikari.fi
For groups: sales@nallikari.fi

Industry

Kraton Chemical Oulu

Nuottasaarentie 17,
Fin-90400 Oulu
Tel: +358 40 341 3300
www.kraton.com

OMP WORKS OY

Sälpätie 6, Fin-90620 Oulu
Tel: +358 400 926 769
www.ompgroup.fi

Cinia Group Oy

Ilmalantori 1, Fin-00240
Helsinki
Tel: +358 2300 8708
www.cinia.fi

Prysmian Group

Johdintie 5, Fin-90620 Oulu
Tel: +358 10 5661
www.prysmiangroup.fi
Bittium Corporation
Ritaharjuntie 1,
Fin-90590 Oulu,
Tel. +358 40 344 2000
www.bittium.com

Finnsementti Oy (Cement)

Vihreäsaari
Hietasaarentie 69,
Fin-90150 Oulu
Tel. +358 201 206 211
Kari Kulkula
Tel +358 400 943 608
www.finnsementti.fi

Taminco Finland Oy

Typpitie 1, Fin-90620 Oulu
Tel. +358 207 108 300
www.taminco.com

Nokia Solutions and Networks Oy

Kaapelitie 4, Fin-90620 Oulu
P.O. Box 319, 90651 Oulu
Tel +358 7 1400 4000

Outokumpu Stainless Oy

Terästie
Fin-95490 Tornio
Tel: +358 16 4521
www.outokumpu.com

Omya Oy (Chemicals)

Itämerenkatu 1,
Fin-00180 Helsinki
Tel: +358 10 235 6300
www.omya.com

PKC Group Ltd

Vihikari 10,
Fin-90440 Kempele
Tel: +358 20 175 2111
www.pkcgroup.com

Polar Electro Oy

Professorintie 5,
Fin-90440 Kempele
Tel: +358 8 520 2100
www.polar.fi

Pölkky Oy

Kemijärventie 73 Fin-93600
Kuusamo
Tel: +358 20 764 0200
e-mail: office@polkky.fi
www.polkky.fi
**SSAB Europe,
Raahen terästehdas
(Steel Industry)**
Rautaruukintie 155,
Fin-92100 Raahen
Tel: +358 20 59 22410
Fax: +358 20 59 22491
www.ssab.firuukki.com

Stora Enso Oulu Mills

Oulun Tehtaat
P.O. Box 196, Fin-90101 Oulu
Tel: +358 204 6124
www.storaenso.com

Turveruukki Oy (Peat Producer)

Tervahovintie 10,
Fin-90520 Oulu
Tel: +358 8 558 433 00
www.turveruukki.fi
www.oulunenergia.fi

Insurance

If-Vakuutus

Yrttipellontie 1, Technopolis
Fin-90230 Oulu
Tel: +358 10 0191 500
www.if.fi

Pohjola-yhtiöt

Isokatu 14, Fin-90100 Oulu
Tel: +358 3 03 03 03
www.pohjola.fi

LähiTapiola Pohjoinen

Kirkkokatu 9, Fin-90100 Oulu
Tel: +358 8 814 2500
www.tapiola.fi

Maintenance

Sah-ko Oy
Lumijoentie 6,
Fin-90400 Oulu
Tel: +358 50 330 0475
www.sah-ko.fi

Oil Companies

Fortum Oyj
P.O.Box 1, Fin-00048 Fortum
Tel: +358 10 45 66080
www.fortum.fi

Neot Oy, Oulun terminaali

Hietasaarentie 60,
Fin-90510 Oulu
+358 50 436 7172
www.neot.fi
Oy Teboil Ab
Kiilakiventie 1,
Fin-90250 Oulu
Tel: +358 20 47001
www.teboil.fi

St1 Oy

Terminaalitie 4,
Fin-90400 Oulu
Tel: +358 10 55711
www.st1.fi

Printing

KTMP Group

Singsbyntie 386,
Fin- 65710 Singsby
Tel: +358 45 866 2833
www.ktmp.fi

Sanomalehti Kaleva

P.O. Box 170,
Fin-90401 Oulu
Tel: +358 8 537 7610
www.kaleva.fi

Suomenmaa-yhtiöt Oy

P.O.Box 52, Lekatie 6,
Fin-90101 Oulu
Tel: +358 44 7778 710
www.suomenmaa.fi

Science Parks

Technopolis, Oulu
Elektroniikkatie 2,
Fin-90590 Oulu
Tel: +358 46 870 0041
oulu@technopolis.fi
www.technopolis.fi

Ship Chandler

Ab ME Group Oy Ltd

Poikkimaantie 2,
Fin-90400 Oulu
Tel: +358 44 454 7403
www.megroup.fi

Shipping Agents

GAC Finland

Pasilankatu 2, Fin-00240
Helsinki
Tel: +358 105 458 810
www.gac.com

C & C Port Agency

Finland Oy Ltd
Hietalahdenranta 5 C/8,
Fin-00120 Helsinki,
Tel: +358 10 34 678 20
www.portagency.fi

Herman Andersson Oy

Poikkimaantie 12, P.O. Box 37,
Fin-90401 Oulu
Tel: +358 8 315 0100
www.hermanandersson.fi

Oy M. Rauanheimo Ab

Poikkimaantie 4,
Fin-90401 Oulu
Tel: +358 20 7771 300

Oy Tramp Agencies Ltd

Uittamotie 3,
Fin-00940 Helsinki
Tel: +358 9 146 1170
tramp@tramp.fi
www.tramp.fi

Shipping Lines

Utkilen AS

P.O. Box 1163 Sentrum
N-5811 Bergen, Norway
Tel: +47 5530 7800
www.utkilen.no

Ivar Lundh & Co AB

Styrmansgatan 4,
Se-11454 Stockholm,
Sweden
Tel: +46 8 555 72600
www.ilco.se

Deutsche Afrika-Linien/ John T. Essberger Group of Companies

Palmaille 45
D-22767, Hamburg, Germany
Tel: +49 40 380160
www.essberger.de

Merilinja Oy

Terminaalitie 6,
Fin-90400 Oulu
Tel: +358 400 585 790
www.merilinja.fi

MTL Maritime Transport + Logistik Gmbh & Co.kg

August-Hirsch-Straße 10,
D-47119 Duisburg, Germany
Tel: +49 203 808 870
www.mtl-duisburg.de

Navalis Shipping

Gmbh & Co. Kg
Wilhelm-Schröder-Str. 3
D-21276 Oldendorf, Germany
Tel: +49 4144 619060
www.navalis.com

X-PRESS FEEDERS A gency GmbH

Singapurstraße 1
D-20457 Hamburg, Germany
Tel: +49 40 3691 92500
www.x-pressfeeders.com

Global Freight

Solutions Oy Ltd.
Stella Terra
Lars Sonckin kaari 16, 5 krs.,
Fin-02600 ESPOO
Direct phone:
+358 50 324 7870

Info email:
sales@gsolutions.fi
X-Press Feeders email:
xpf@gsolutions.fi

Neste Shipping

P.O. Box 95, Fin-00095 Neste
Keilaranta 21, Espoo
Tel: +358 10 458 11
www.nesteoil.com

Royal Wagenborg (head office)

P.O. Box 14, 9930 AA Delfzijl
The Netherlands
Tel: +31 596 636 911
www.wagenborg.com

Wijnne & Barends' Cargadoors- En Agentuurkantoren B.V.

P.O. Box 123,
NL-9930 AC Delfzijl
The Netherlands
Tel: +31 596 63 77 77
www.wijnnebarends.com

SWALLENIUS SOL AB

Klippan 1A
SE-414 51 Göteborg, Sweden
Tel: +46 (0)31-354 40 50
www.wallenius-sol.com

Terminal Operators

BB Logistics Oy

Kalasatamantie 30,
Fin-64260 Kaskinen
Tel: +358 50 598 9657
www.bblogistics.fi

BB Logistics Oy

Pohjois-Suomi
Hietasaarentie 71,
Fin-90510 Oulu
Tel: +358 40 861 3412
www.bblogistics.fi

Herman Andersson Oy

Poikkimaantie 12,
P.O. Box 37,
Fin-90401 Oulu
Tel: +358 8 315 0100
www.hermanandersson.fi

Wibax Oy

Rantakatu 14 Lh 2b
65100 Vaasa
Tel: +358 500 365 724
www.wibax.com/fi

Wibax Oy /Terminal Oulu

Hietasaarentie 72
Antti Kolehmainen
Terminal Manager
GSM: +358 44 357 5906
antti.kolehmainen
@wibax.com

Oulun Konttivuokraus Oy

Poikkimaantie 4,
Fin-90400, Oulu
Tel: +358 50 300 4603
email: info@konttivuokraus.fi
www.konttivuokraus.fi

Oy M. Rauanheimo Ab

Poikkimaantie 4,
Fin-90401 Oulu
Tel: +358 20 7771 300
www.rauanheimo.com

Transport

DSV Road Oy

Kytösavuntie 2,
Fin-90450 Kempele
Tel: +358 207 388 388
www.dsv.com

Samat Nordic

Terminaalitie 8,
FI-90400 OULU
Phone +358 207 548 100
info@haanpaa.com
www.samat.com

Hoyer Finland Oy

Laippatie 3,
Fin-00880 Helsinki
Phone +358 9 7010 2500
www.hoyer-group.com

Korsu Oy

Ollinkalliontie 10,
Fin- 92100 Raahen
Tel: +358 407 144 600
www.korsu.fi

Oy Kuehne + Nagel Ltd – Finnish Head Office

Karhumäenkuja 2,
Fin-01530 Vantaa
Tel: +358 201 611 611
www.kn-portal.com

Oy Kuehne + Nagel Ltd / Oulu

Temmeksentie 10,
Fin – 90400 Oulu
info.helsinki
@kuehne-nagel.com

Kuljetusliike Kinnunen Oy

Poikkimaantie 16,
Fin-90400 Oulu
Tel: +358 40 583 2243
www.kuljetuskinnunen.fi

Oulun Autokuljetus Oy

Merilinja 2, Fin-90400 Oulu
Tel: +358 44 7125 000
www.oak.fi

Oulun Kaukokiito Oy

Terminaalitie 5,
Fin-90400 Oulu
Tel: +358 44 418 8124
www.kaukokiito.fi

Schenker-BTL

Oritkarintie 1, Vähälä,
Fin-90400 Oulu
Tel: +358 10 520 00
www.schenker.fi

VR Transpoint Oy Ab

P.O.Box 488 (Radiokatu 3)
Fin-00101 Helsinki
Tel: +358 29 43 43
www.vrtranspoint.fi

Tschudi Logistics Oy

Huolintakatu 5,
Fin-20200 Turku
Tel: +358 (0)2 517 2200
www.tschudilogistics.com

Votg Finland

Telitie 3,
Fin-04300 Tuusula
Tel: +358 9 7310 1316
www.votg.de

Vähälä Yhtiöt

Oritkarintie 1,
Fin- 90400 Oulu
Tel: +358 10 520 7643
email: markku.rautio@
vahala.fi
www.vahala.com

PORT OULU

Port of Oulu
Poikkimaantie 16,
Fin-90400 Oulu
Tel: +358 44 703 2753,
monday to friday 9 am – 3 pm
oulunsatama@ouluport.com
www.ouluport.com